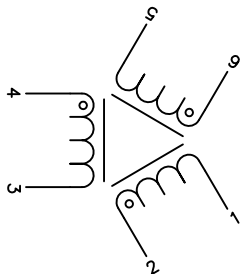
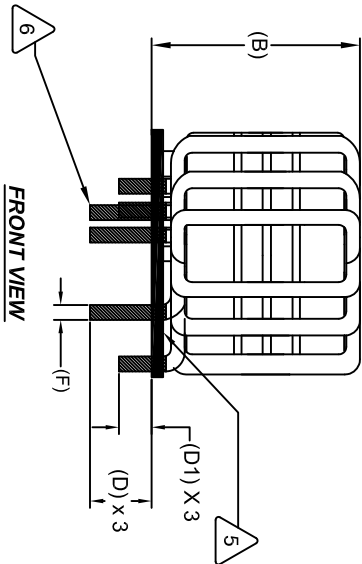


DIMENSIONAL TOLERANCE INCHES [MM]					
A(OD) Max	B(HGT) Max	D1(LEAD) Min	D(LEAD) Min	F (Lead Dia) Typ	
1.968 [50.00]	1.800 [45.72]	0.350 [8.89]	0.500 [12.70]	0.081 [2.05]	

REVISION HISTORY					
REV	ECN	DESCRIPTION	BY	DATE	DATE
A	140922	PRODUCTION RELEASE	AK	09/25/14	09/25/14
B	N/A	UPDATED MECH. DIM.	TN	05/14/18	05/14/18



SCHEMATIC

6 TRIM INNER LEADS TO 0.50 AND OUTER LEADS TO 0.35 INCH FROM BOTTOM OF BASE

5 APPLY EPOXY

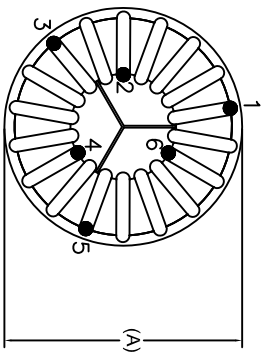
4 STRIP AND TIN LEADS (NO INSULATION IS ALLOWED BELOW THE BASE LEVEL.)

WEIGHT = ~200 GRAMS
OPERATING TEMP RANGE = -40°C TO 125°C
MAX TEMP RISE = 30°C
INTERWINDING ISOLATION = 2000 VOLTS RMS
DCR ON EACH WINDING = 6.5 mΩ MAX
SRF = 380 KHz TYP
RATED VOLTAGE = 1000 VAC OR VDC
RATED CURRENT = 25 AMPS
LEAKAGE INDUCTANCE = 11 μH TYP @ 10 KHz, 0.25 Vrms
INTERWINDING CAPACITANCE = 25 pF TYP @ SRF
IMPEDANCE = 5 kΩ NOM @ SRF
L = 10.0 mH MIN @ 10 KHz, 0.25 Vrms, 0 ADC

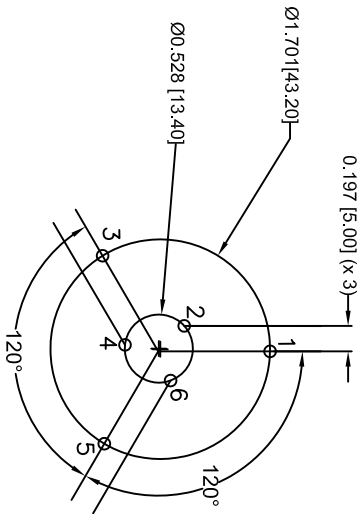
3 SPECIFICATIONS AT 25°C:

- 1 WIRE: UL RECOGNIZED 200°C RATED MAGNET WIRE
CWS BYTEMARK OR OTHER APPROVED PART
- 2 CORE: NANOCRYSTALLINE OR AMORPHOUS CORE
- 1 CASE RATING CLASS B (130°C) REQUIRED
MATERIAL: UL RECOGNIZED FOR FLAMMABILITY

NOTES: UNLESS OTHERWISE SPECIFIED, READ NOTES FROM BOTTOM TO TOP
CAGE CODE: 5DME2



TOP VIEW



MOUNTING HOLES PATTERN

AUTOCAD	X	www.coilw.com	Coil Winding Specialist Inc.
SOLIDWORKS		353 West Grove Ave	Orange, California. 92665
SIGN	DATE	DATE	DATE
DRWN AK	9/23/14	AK	09/25/14
CHKD BO	9/23/14	BO	09/25/14
ENGR. JLU	9/23/14	JLU	05/14/18
APPR. BO	9/23/14	BO	05/14/18
DO NOT SCALE DRAWING		SCALE	N/A
		SHEET	10F
			1